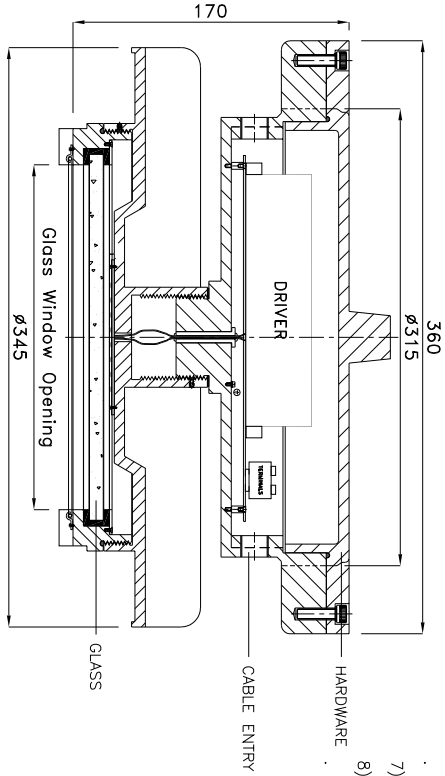


Plan View of Well Glass Fitting
(TYPE - 1)

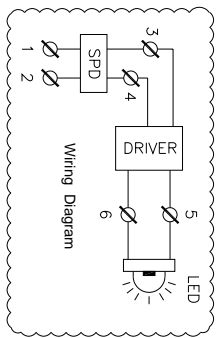


SECTIONAL VIEW OF WELL GLASS FITTING
SECTION - C-C'

- Light Fitting Standard Specification :**
- a) WATTAGE : 250 WATTS
 - b) VOLTAGE : 140V-270V AC
 - c) POWER FACTOR : >0.95
 - d) INPUT FREQUENCY : 50 Hz
 - e) EFFICACY : ≥100 LUMEN PER WATT
 - f) COLOUR (CCT) : 3000K/5700K/6500K/OR AS SPECIFIED
 - g) CRI : ≥80 RA
 - h) TOTAL HARMONIC DISTORTION : ≤ 10% THD
 - i) BEAM ANGLE : 120 DEGREE
 - j) SURFACE TEMPERATURE : MAX. 70°
 - k) SURGE PROTECTION : 10 KV SPD

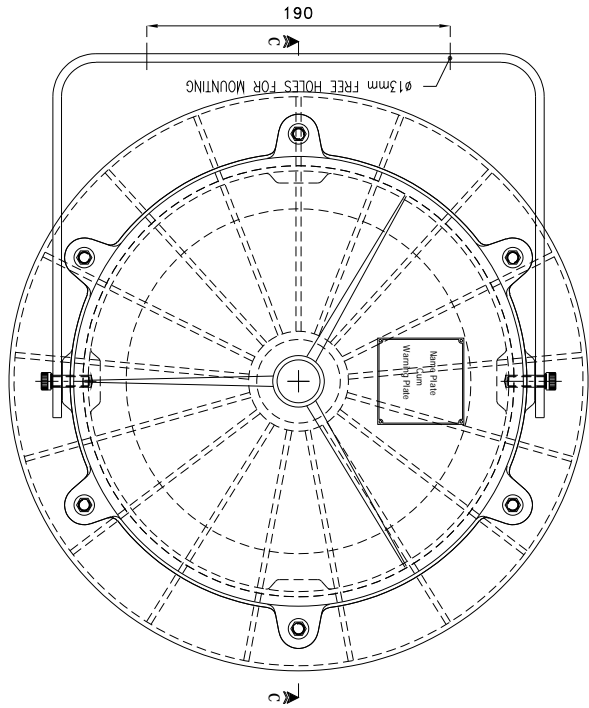
Light Fitting OPTIONS :

- Light Fitting CONSTRUCTION :** STAINLESS STEEL
- 1) MATERIAL CONSTRUCTION : STAINLESS STEEL
 - 2) VOLTAGE : 220V DC/110V AC/110V DC/24V AC
 - 3) GLASS TYPE : DOME / FLAT / LENS
 - 4) BEAM ANGLE : LENS AVAILABLE 60/90/120 DEGREE
 - 5) LED MAKE : CITIZEN/OSRAM/BRIDGELUX/EQUIVALENT
 - 6) DRIVER MAKE : OSRAM/PHILIPS/FULHAM/EQUIVALENT
 - 7) CABLE GLAND & PLUG : BRASS/S.S./ALUMINIUM
 - 8) WIRE GUARD : M.S. WHITE EPOXY POWDER COATED / S.S.

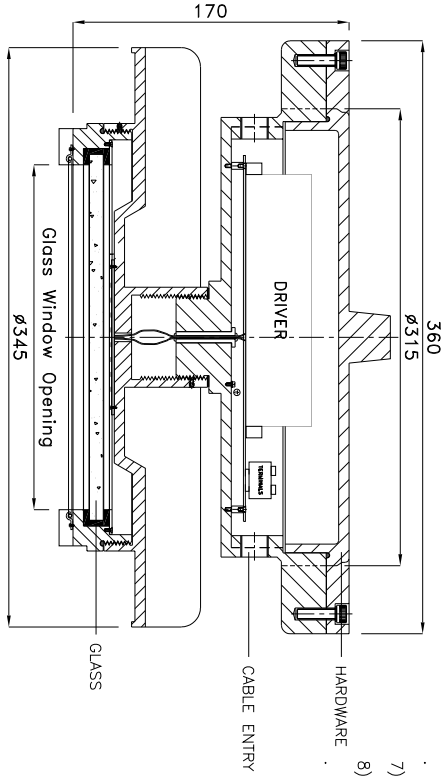


NOTE :
 COMPONENT LAYOUT IS TENTATIVE RELOCATION OF PARTS & COMPONENTS IS POSSIBLE AT THE TIME OF ACTUAL MANUFACTURING.
 OVERALL DIMENSIONS ARE ±10mm

REV.	DATE	DESCRIPTION	DRN.	CHD.	APP.	SCALE	CAT. No.	MODEL No.	TITLE	QMR. CERT. No.	PESO No. :	BIS LICENCE No. :
Δ							WG/1240	WG/1240/F/250	FLP-WIP ENCLOSURE FOR WELL GLASS LIGHT FITTING SUITABLE FOR 250 WATTS LED LIGHT FITTING		P546023/1	CM/L-0002914461
Δ												
Δ												
Δ												
Δ												



Plan View of Well Glass Fitting (TYPE - 1)

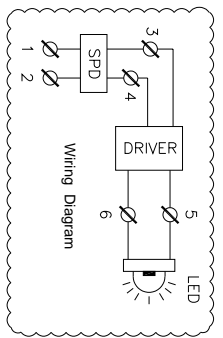


SECTIONAL VIEW OF WELL GLASS FITTING SECTION - C-C'

- Light Fitting Standard Specification :**
- a) WATTAGE : 300 WATTS
 - b) VOLTAGE : 140V-270V AC
 - c) POWER FACTOR : >0.95
 - d) INPUT FREQUENCY : 50 Hz
 - e) EFFICACY : ≥100 LUMEN PER WATT
 - f) COLOUR (CCT) : 3000K/5700K/6500K/OR AS SPECIFIED
 - g) CRI : ≥80 RA
 - h) TOTAL HARMONIC DISTORTION : ≤ 10% THD
 - i) BEAM ANGLE : 120 DEGREE
 - j) SURFACE TEMPERATURE : MAX. 70°
 - k) SURGE PROTECTION : 10 KV SPD

Light Fitting OPTIONS :

- Light Fitting CONSTRUCTION :** STAINLESS STEEL
- 1) MATERIAL CONSTRUCTION : STAINLESS STEEL
 - 2) VOLTAGE : 220V DC/110V AC/110V DC/24V AC
 - 3) GLASS TYPE : DOME / FLAT / LENS
 - 4) BEAM ANGLE : LENS AVAILABLE 60/90/120 DEGREE
 - 5) LED MAKE : CITIZEN/OSRAM/BRIDGELUX/EQUIVALENT
 - 6) DRIVER MAKE : OSRAM/PHILIPS/FULHAM/EQUIVALENT
 - 7) CABLE GLAND & PLUG : BRASS/S.S./ALUMINIUM
 - 8) WIRE GUARD : M.S. WHITE EPOXY POWDER COATED / S.S.



Reference IS/IEC Standard as follows :

- 1 - FLAMEPROOF (Ex d) PROTECTION - IIA/IIb & IIC, IS/IEC 60079-1 (2014)
- TEMPERATURE CLASS - T6
- 2 - INGRESS (IP) PROTECTION - IP-66, IS/IEC 60529 (2001). (Reaffirmed 2014)

Standard Specification :

- 1 - MATERIAL - CAST ALUMINIUM ALLOY
- 2 - FINISH - INSIDE & OUTSIDE LIGHT GREY EPOXY POWDER COATING SHADE No. 631 AS PER IS-5
- 3 - EARTHING - 1 No. INSIDE & 2 Nos. OUTSIDE M6 SIZE S.S./BRASS SCREWS WITH 2 Nos. PLAIN WASHER
- 4 - HARDWARE - STAINLESS STEEL
- 5 - GASKET - 'O' RING ENDLESS NEOPRENE RUBBER GASKET
- 6 - MOUNTING ARRGT. - AS SHOWN IN DRG.

Material / Components Specification :

- 1 - S.S. NAME CUM WARNING PLATE (WITH DESCRIPTION TITLE, CIMFR, PESO, SR. NO., GAS GROUP, RATING, BIS MARKING, WARNING STATUS, etc...)
- 2 - GLASS - HEAT RESISTANCE CLEAR TOUCHENED GLASS 'TYPE-A' OF 'SUDHIR' BRAND
- 3 - CABLE ENTRIES - 2 Nos. M20 / 1/2" NPT / 3/4" ET SIZE CABLE ENTRIES FROM SIDE (REFER DRAWING)
- 4 - TERMINALS - 6 Nos. 2.5sq. mm (MICRO) CLIP-ON TYPE TERMINALS OF 'ELMEY/CONNECTWELL' MAKE

NOTE :

COMPONENT LAYOUT IS TENTATIVE RELOCATION OF PARTS & COMPONENTS IS POSSIBLE AT THE TIME OF ACTUAL MANUFACTURING.
OVERALL DIMENSIONS ARE ±10mm

REV.	DATE	DESCRIPTION	DRN.	CHD.	APP.	SCALE
Δ						
Δ						
Δ						

CAT. No. **WG/1240**

MODEL No.: **WG/1240/F/300**

DRN. **JMSHW**
APPD. **JMSHW**
SHEET 1 OF 1
SCALE N.T.S. REV.-0

SUDHIR SWITCHGEARS PVT. LTD.
130, MULBARI SAMACHAR MARG, MULBARI - 400 023

TITLE : **FLP-WIP ENCLOSURE FOR WELL GLASS LIGHT FITTING SUITABLE FOR 300 WATTS LED LIGHT FITTING**

QMR. CERT. No. **IN/CIMFR/TR21/P/H176**
Dt. 11/08/2021
PESO No. : **P546023/1**
Dt. 26/09/2022
BIS LICENCE No. : **CM/L-0002914461**